

# 40 | SUMMER STREET

SUMMER EXCHANGE BUILDING | BOSTON, MA

PRIME OFFICE  
LEASING OPPORTUNITY  
*in historic*  
FINANCIAL DISTRICT  
BUILDING



## 5th Floor Office Space 6,531 SF FOR LEASE

Located in the heart of Downtown Crossing across from Macy's, the Summer Exchange Building is accessed through the lobby of 101 Arch Street and includes four floors of office space served by a tastefully decorated lobby highlighted with two mahogany and bronze elevators. Beautiful Cast Iron Façade, and located just steps from the new Tontine Crescent Plaza

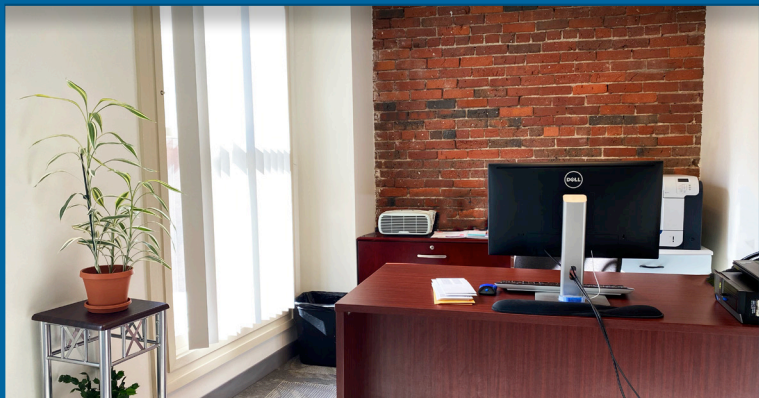
Tenants of Summer Exchange enjoy the amenities of 101 Arch Street: direct access to the MBTA Orange and Red Line at Downtown Crossing, retail and banking facilities, Roche Bros, Cafe Nero, Chacarero, and Archie's New York Deli.

## Building/Space Features

- Full Floor Leasing Opportunity
- Direct Elevator Access
- Oversized Windows
- New Class A Lobby Entrance via 101 Arch Street
- Direct MBTA Access
- Exposed Brick and Ample Natural Light

[TAKE A VIRTUAL TOUR](#)

NEWLY  
*Renovated*  
LOBBY





# 40 | SUMMER STREET

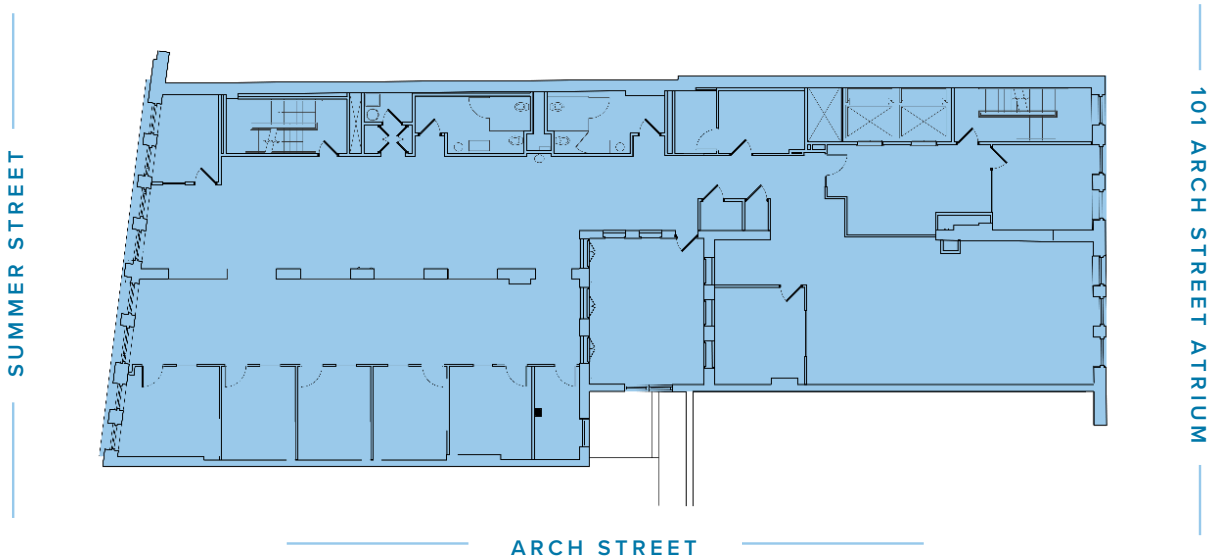
SUMMER EXCHANGE BUILDING | BOSTON, MA

STEPS FROM THE NEW  
**Tontine Crescent Plaza**



## Leasing Opportunities

Size: **6,531 SF** | Floor: **5** | Available: **IMMEDIATELY** | Term: **NEGOTIABLE**



JON GIFFORD  
Executive VP  
(617) 542.8008  
jgifford@perrycre.com

JAKE GOLDEN  
Assistant VP  
(617) 201-8213  
jgolden@perrycre.com