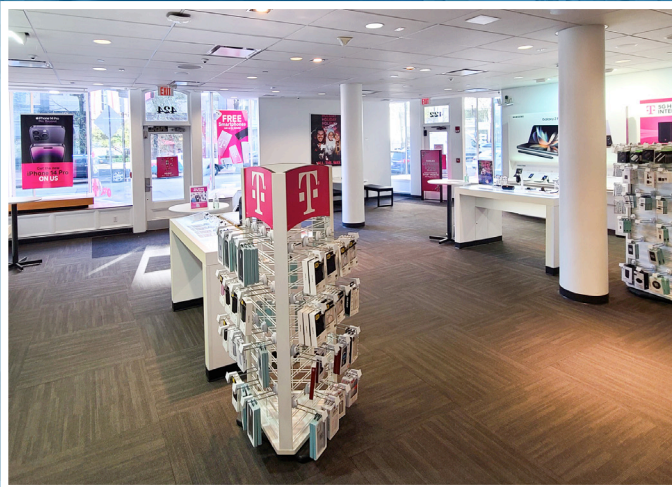


422 BOYLSTON STREET



PRIME RETAIL SPACE FOR LEASE AT THE BERKELEY BUILDING

LEASING OPPORTUNITY

GROUND FLOOR: 2,746 SF

LOWEL LEVEL: 2,500 SF

AVAILABLE: AUGUST 2023

TERMS: NEGOTIABLE



