



UNBEATABLE VIEWS | PRIME OFFICE SPACE

5,041 SF FOR LEASE



## PROPERTY INFORMATION

420 Boylston is an award-winning historic restoration owned and managed by A.W. Perry. Located in the heart of Boston's Back Bay, it is surrounded by numerous shops, restaurants, hotels, and adjacent to the Arlington Green Line T Station. Oversized windows provide abundant natural light and terrific views of Berkeley and Boylston Streets.



## LEASING OPPORTUNITIES

Size: **5,041 SF** | Floor: **4**

Available: **Immediately**

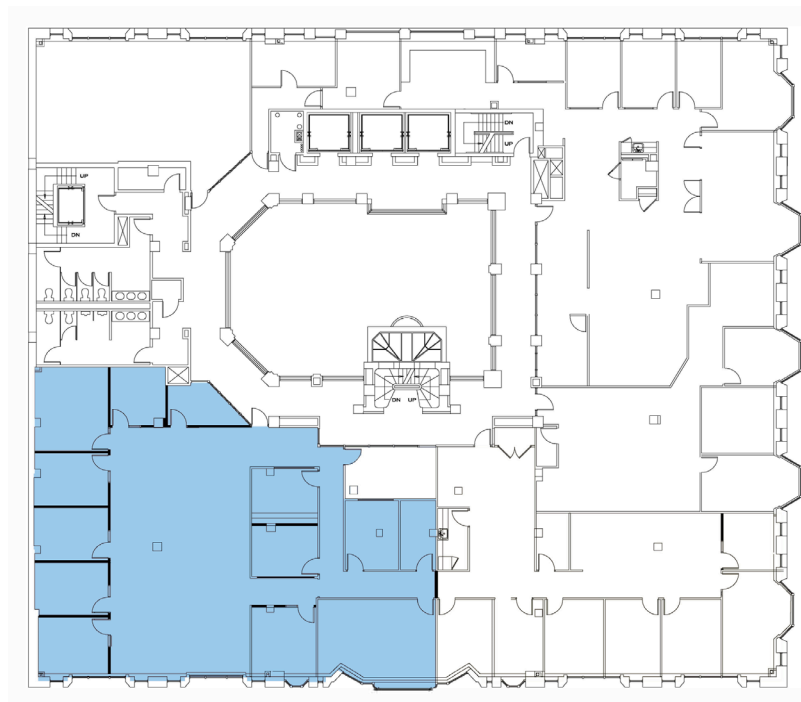
## BUILDING FEATURES

- Elegant Lobby With Six-Story Atrium
- 24-Hour Security & Card Access
- On-Site Management
- Large Windows Throughout
- Shared Conference Room
- Bike Storage in Basement
- Locker Rooms With Showers



## 4TH FLOOR EXISTING CONDITIONS

■ Size: 5,041 SF | Floor: 4



↑  
BERKELEY STREET  
↓

← BOYLSTON STREET →

