

POND 2 PARK

SOUTH SHORE PARK | HINGHAM, MA



FIRST CLASS MEDICAL OFFICE

5,000-11,364 SF FOR LEASE

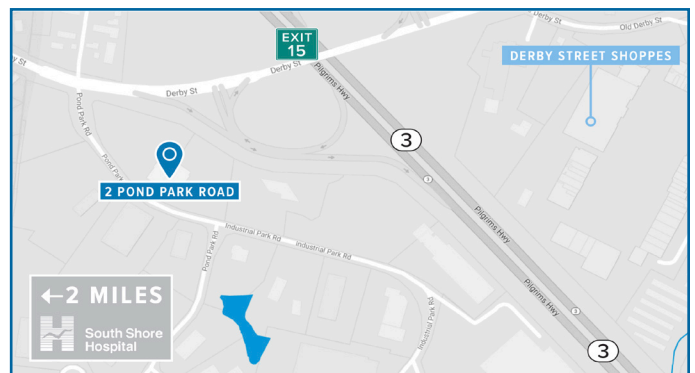
PROPERTY INFORMATION

Join South Shore Hospital and South Shore Orthopedic Associates and other medical practices ranging from physical therapy to plastic surgery in the South Shore's most conveniently located medical facility, just off Route 3 at Exit 15 / Derby Street at the entrance of South Shore Park. Owned and managed by A.W. Perry, this 78,300 sf state-of-the-art facility includes a Diagnostic Imaging Center, Phlebotomy Lab, Pain Center and an Ambulatory Surgical Center with Six Operating Rooms.

LEASING OPPORTUNITIES

Size: **5,000 - 11,364 SF** | Floor: **3**

Available: **Immediately**

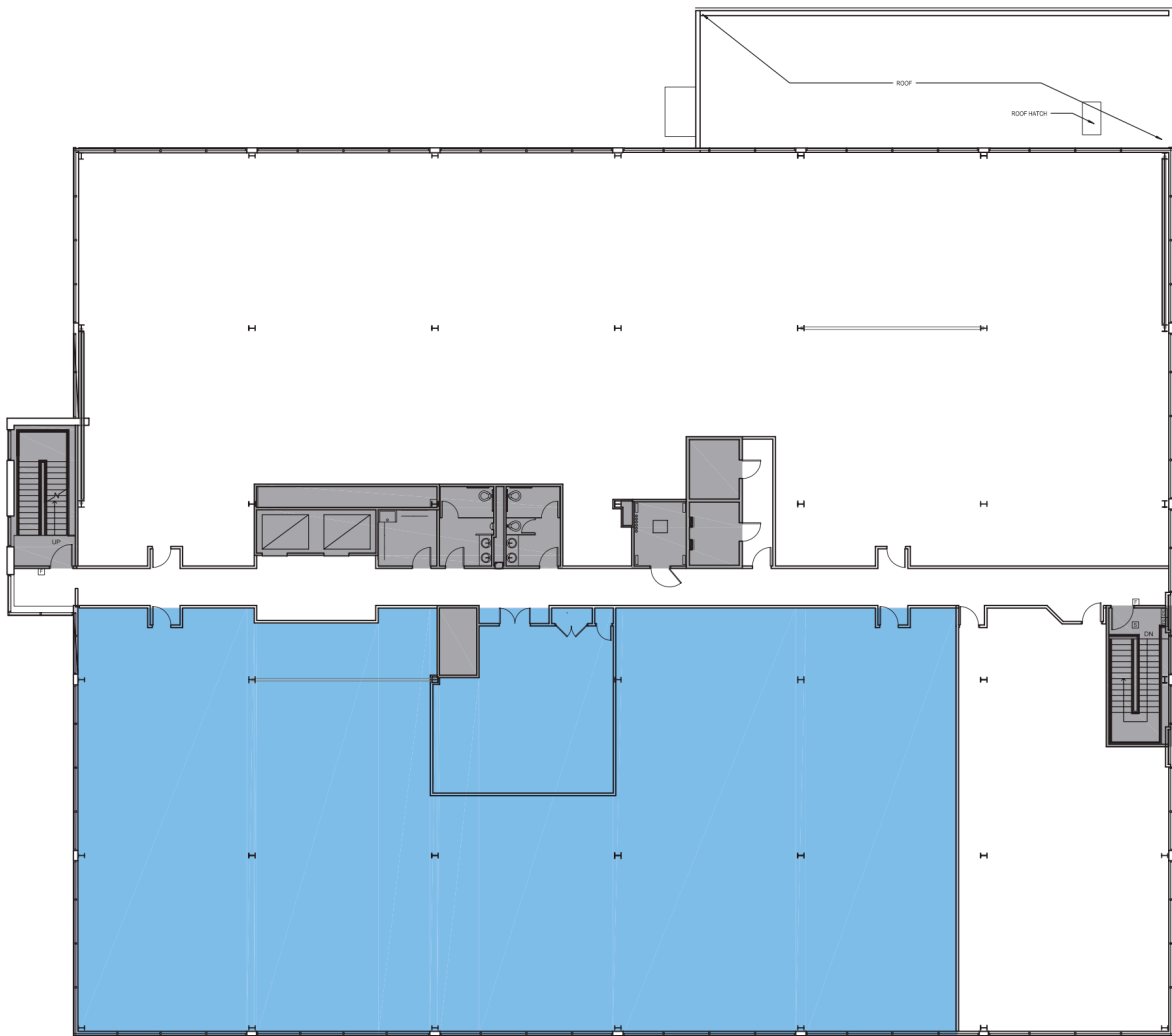


POND 2 PARK

SOUTH SHORE PARK | HINGHAM, MA

3RD FLOOR MARKETING PLAN

5,000 - 11,364 SF



Jon Gifford
Executive Vice President
617.542.8008
jgifford@perrycre.com

Tyler Hilson
Vice President
617.842.9440
thilson@perrycre.com