

POND 4 PARK

SOUTH SHORE PARK • HINGHAM, MA

8,195 - 28,841 SF AVAILABLE

MAXIMIZE YOUR CORPORATE IDENTITY

Design Brand New Space to Fit Your Needs



HINGHAM'S NEWEST HQ OPPORTUNITY



CONCEPTUAL RENDERINGS



POND 4 PARK

50% COST OF BOSTON OFFICE SPACE

CONCEPTUAL RENDERING

PROPERTY OVERVIEW

Hingham's newest corporate headquarters opportunity! Avoid the crowded transit commute and stay healthy with this brand new space, which you can design to fit your needs! **4 Pond Park** offers convenience with easy access to Derby Street, while maintaining a healthy, safe, and comfortable environment for all employees.

LEASING OPPORTUNITIES

Size:

28,841 SF Total { **2nd Floor: 10,318 RSF**
1st Floor: 10,328 RSF
Garden Level: 8,195 RSF

Floor: 1-3

Available: Immediately (Subject to Tenant Buildout)

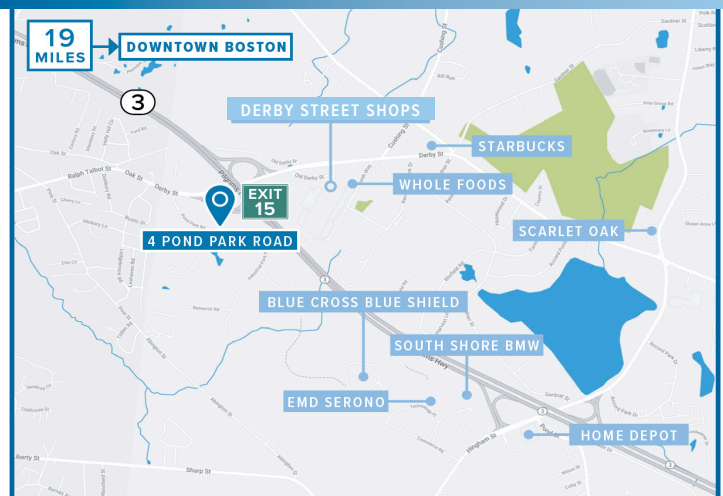
Term: 10 Years

- Parking: 3.5 spaces / 1,000 sf
- Abundant window line with bright natural light
- Owned and managed by A.W. Perry

BONUS FEATURES

- Core and shell renovations recently completed
- Brand new building systems throughout
- Single tenant identity
- A new convenient healthy environment
- Limit your employees commute time
- 50% the cost of Boston office space
- Near Derby Street Shops with numerous amenities nearby
- Naturally wooded setting

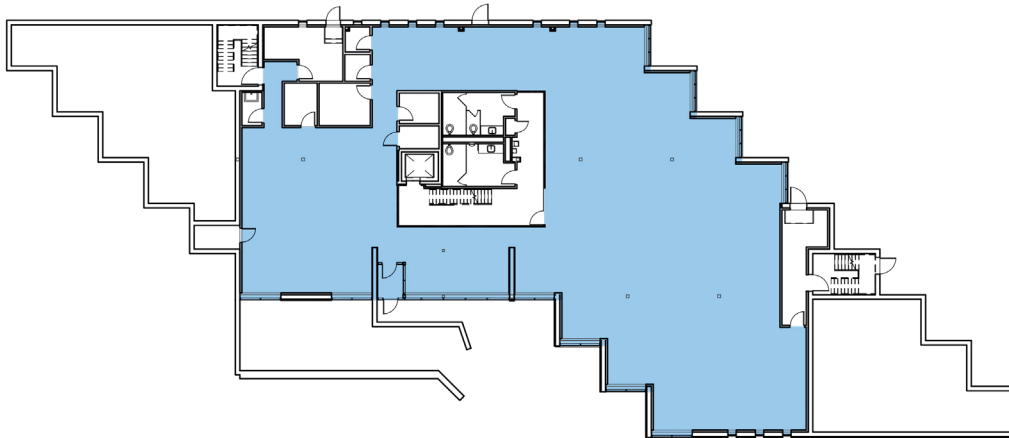
LOCATION MAP



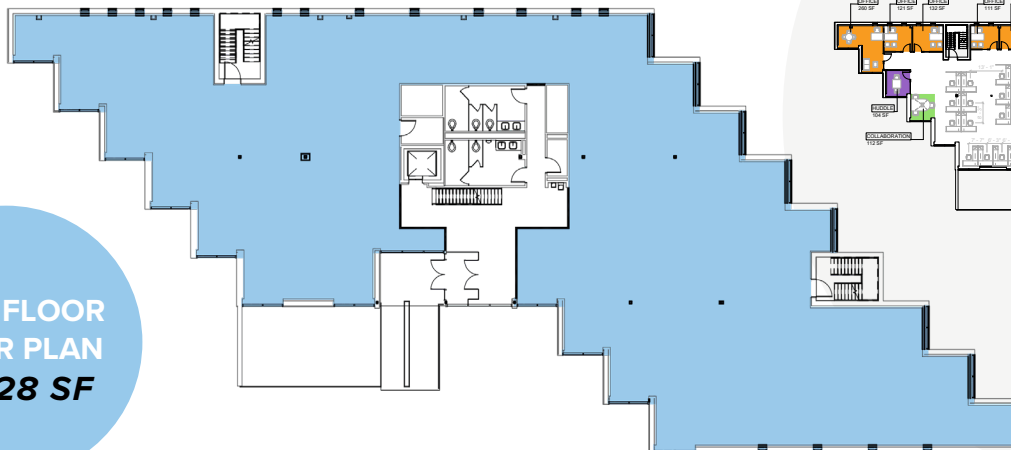
CONVENIENT & HEALTHY ENVIRONMENT



AVAILABLE IN SINGLE FLOOR INCREMENTS OR AS A WHOLE

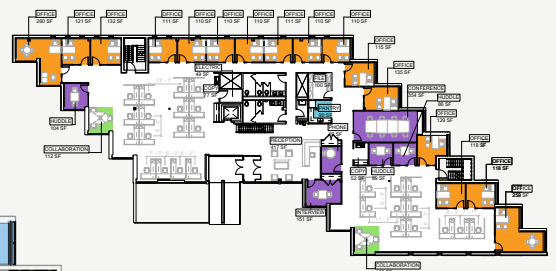


**GARDEN LEVEL
FLOOR PLAN
8,195 SF**

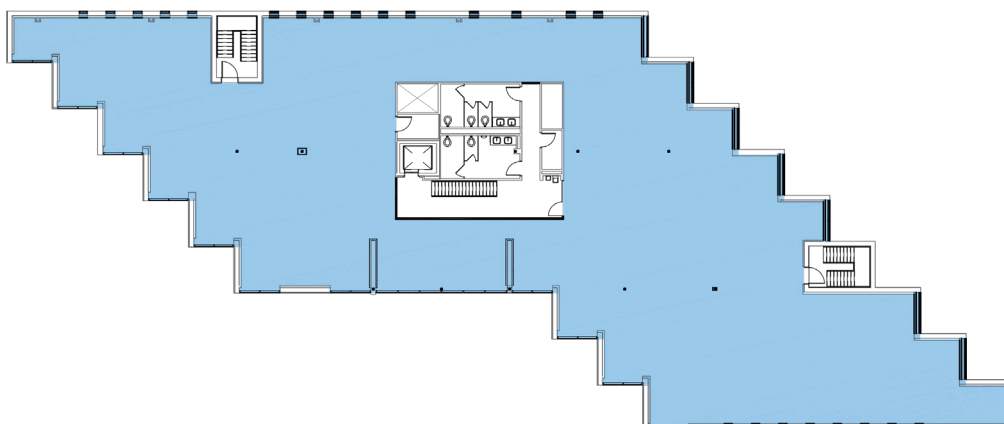


**FIRST FLOOR
FLOOR PLAN
10,328 SF**

CONCEPTUAL PLAN



FIT PLAN - FIRST FLOOR OPTION 2	
ROOM TYPE	PROPOSED
WORK	27
MEETING	1
COLLABORATION	2
CONFERENCE	1
COM	1
CLUB	1
RECEPTION	1
OFFICE	1
RECEPTION	1
RECEPTION	1



**SECOND FLOOR
FLOOR PLAN
10,318 SF**



PERRY

JON GIFFORD

Executive Vice President
617.542.8008
jgifford@perrycre.com

TYLER HILSON

Vice President
617.842.9440
thilson@perrycre.com

91 Franklin Street | Boston, MA 02110

perrycre.com