

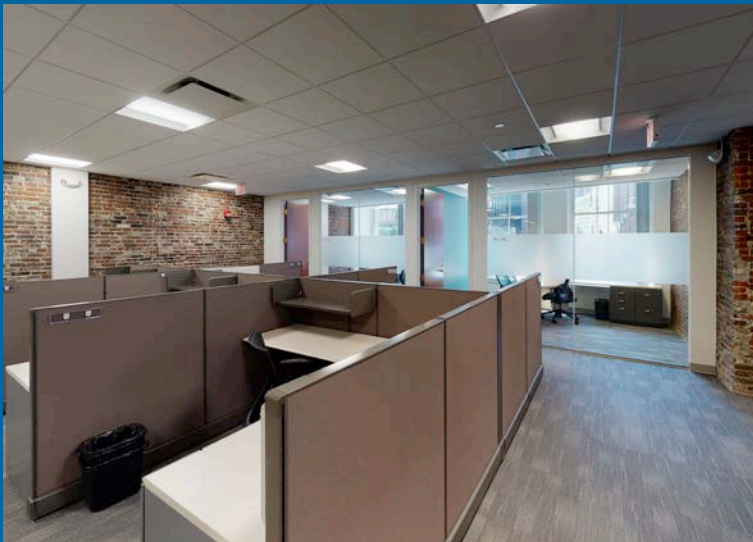
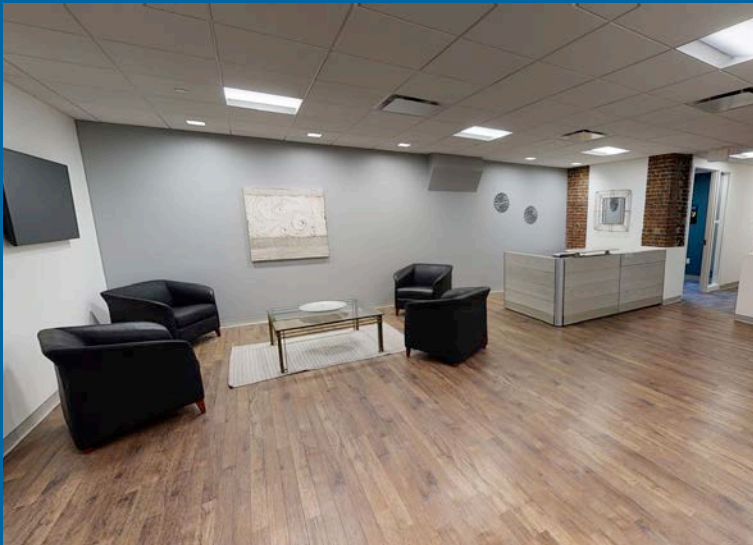
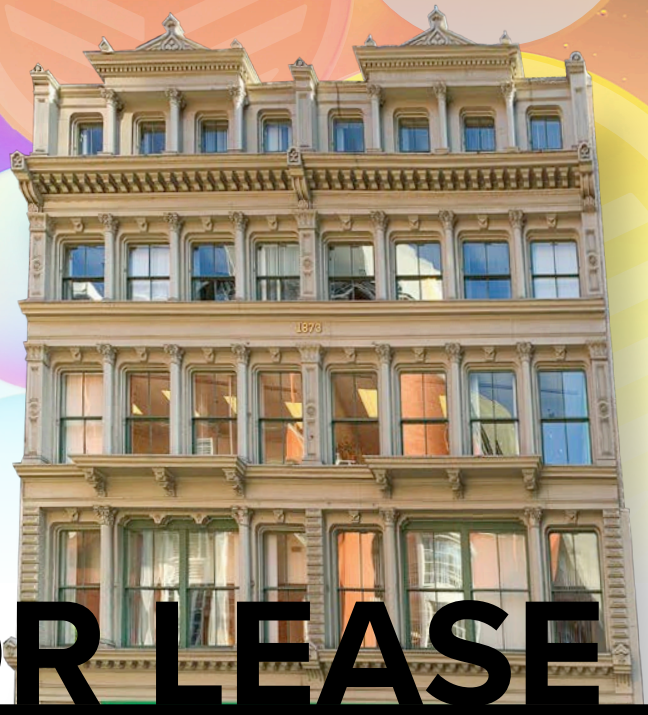
40 Summer Street

SUMMER EXCHANGE BUILDING

ACCESSED VIA 101 ARCH ST

2ND FLOOR OFFICE SPACE

5,848 SF FOR LEASE



In Historic Financial District

Located in the heart of Downtown Crossing across from Macy's, the Summer Exchange Building is accessed through the lobby of 101 Arch Street and includes four floors of office space. Tenants of Summer Exchange enjoy the amenities of 101 Arch Street: direct access to the MBTA Orange and Red Line at Downtown Crossing, retail and banking facilities, Roche Bros, Cafe Nero, Chacarero, and Archie's New York Deli.

Amazing Building/Space Features

- Full Floor Leasing Opportunity
- Direct Elevator Access
- Oversized Windows
- New Class A Lobby Entrance via 101 Arch St.
- Direct MBTA Access
- Exposed Brick and Ample Natural Light

40 Summer Street

SUMMER EXCHANGE BUILDING

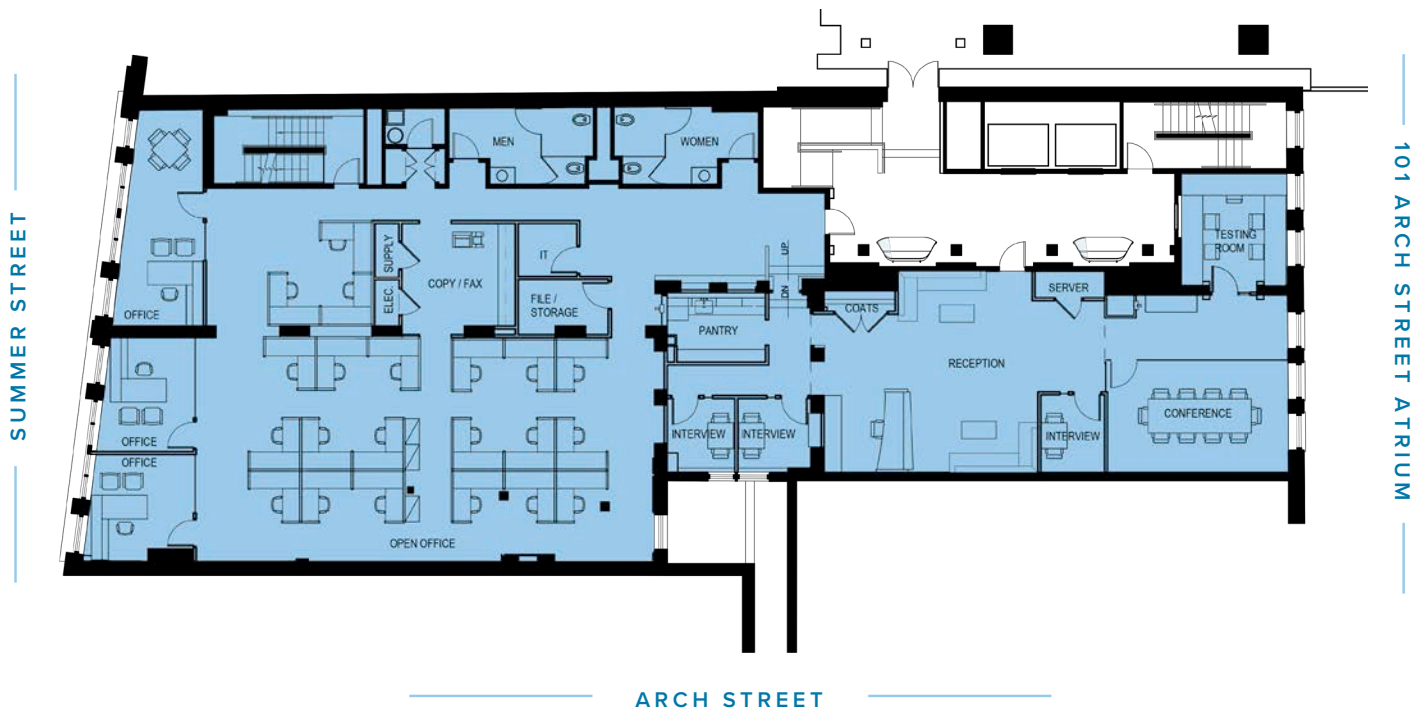
ACCESSED VIA 101 ARCH ST

VIEW VIRTUAL TOUR



Leasing Opportunities

Size: 5,848 SF | Floor: 2 | Available: IMMEDIATELY | Term: NEGOTIABLE



JON GIFFORD
Executive VP
(617) 542.8008
jgifford@perrycre.com

JAKE GOLDEN
Assistant VP
(617) 201.8213
jgolden@perrycre.com