

# 420 BOYLSTON STREET



## FULL FLOOR OPPORTUNITY

16,650 SF FOR LEASE

### LEASING OPPORTUNITIES

Size: 16,650 SF | Floor: 2  
Available: October 2025



### PROPERTY INFORMATION

420 Boylston is an award-winning historic restoration owned and managed by A.W. Perry. Located in the heart of Boston's Back Bay, it is surrounded by numerous shops, restaurants, hotels, and adjacent to the Arlington Green Line T Station. Oversized windows provide abundant natural light and terrific views of Berkeley and Boylston Streets.

### BUILDING FEATURES

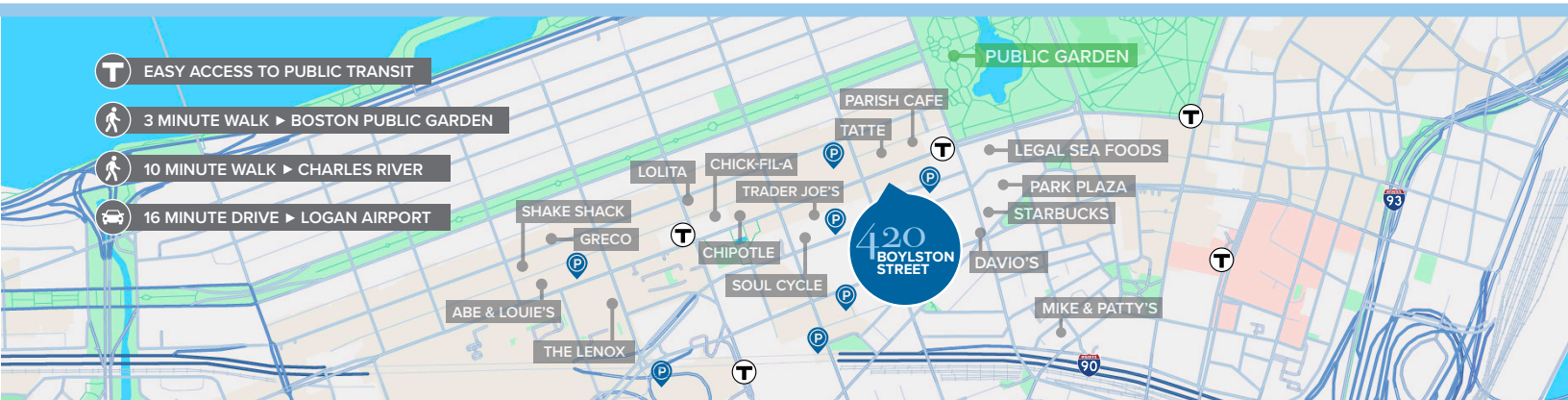
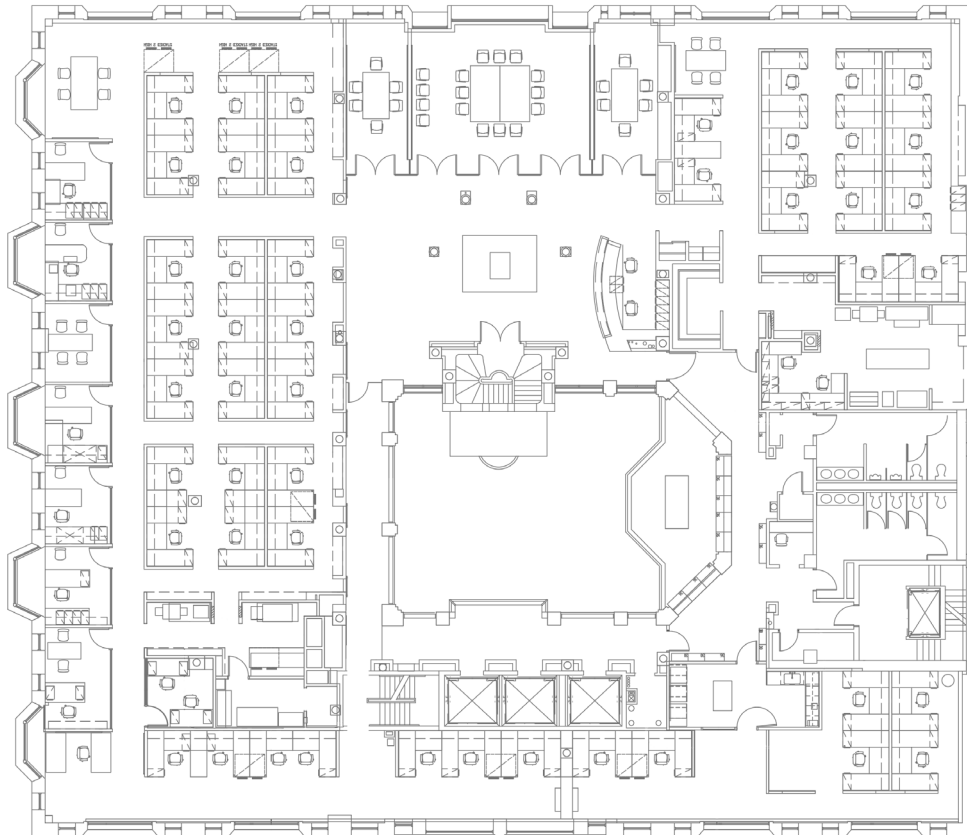
- Elegant Lobby With Six-Story Atrium
- 24-Hour Security & Card Access
- On-Site Management
- Shared Conference Room
- Bike Storage in Basement
- Locker Rooms With Showers



# 420 BOYLSTON STREET

## 2ND FLOOR EXISTING CONDITIONS

Size: 16,650 SF | Floor: 2



JEREMY HOOD  
Senior VP  
(617)717.8870  
jhood@perrycre.com

JAKE GOLDEN  
Assistant VP  
(617) 201-8213  
jgolden@perrycre.com