

# 420 BOYLSTON STREET



## PRIME OFFICE SPACE

5,966 SF FOR LEASE

### LEASING OPPORTUNITIES

Size: 5,966 SF | Floor: 6  
Available: Immediately



### PROPERTY INFORMATION

420 Boylston is an award-winning historic restoration owned and managed by A.W. Perry. Located in the heart of Boston's Back Bay, it is surrounded by numerous shops, restaurants, hotels, and adjacent to the Arlington Green Line T Station. Oversized windows provide abundant natural light and terrific views of Berkeley and Boylston Streets.

### BUILDING FEATURES

- Elegant Lobby With Six-Story Atrium
- 24-Hour Security & Card Access
- On-Site Management
- Shared Conference Room
- Bike Storage in Basement
- Locker Rooms With Showers

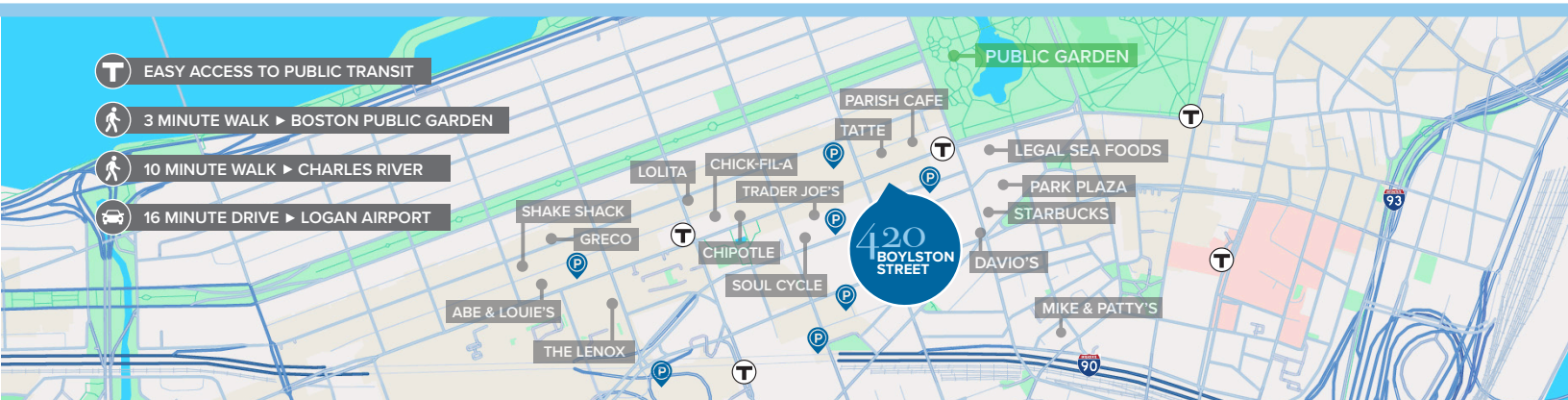
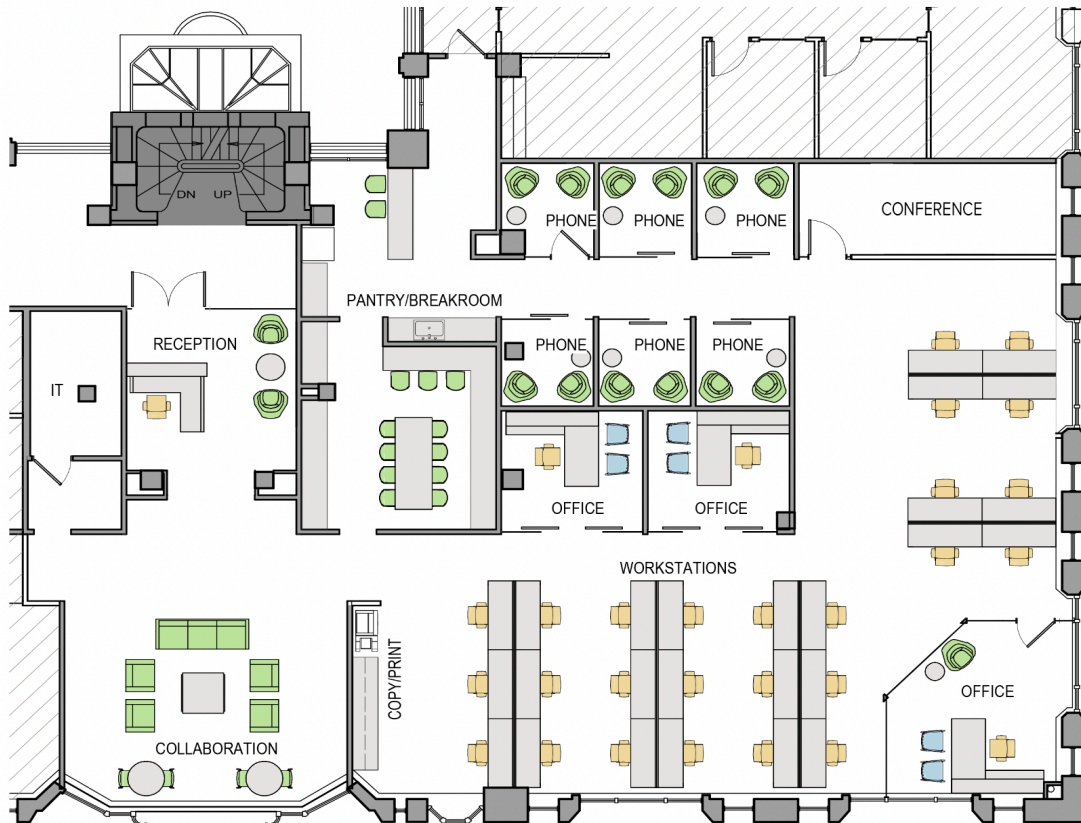




# 420 BOYLSTON STREET

## 6TH FLOOR EXISTING CONDITIONS

Size: 5,966 SF | Floor: 6



- EASY ACCESS TO PUBLIC TRANSIT
- 3 MINUTE WALK ► BOSTON PUBLIC GARDEN
- 10 MINUTE WALK ► CHARLES RIVER
- 16 MINUTE DRIVE ► LOGAN AIRPORT



**JEREMY HOOD**  
Senior VP  
(617) 717.8870  
jhood@perrycre.com

**JAKE GOLDEN**  
Assistant VP  
(617) 201-8213  
jgolden@perrycre.com